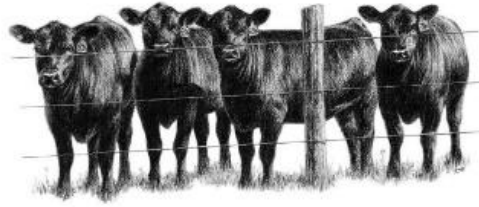




CUCUMBER HILL FARM, LLC
FOSTER, RI



39 Cucumber Hill Rd
Foster, RI 02825
401-397-7500
info@cucumberhillfarm.com

CATTLE Co.

¼ and ½ Beef Cut Sheet

Freezer Space:

- For every 30-35 lbs. of finished meat, plan for 1 cu ft of chest freezer space
- For every 30-35 lbs. of finished meat, plan for 1.2 cu ft of upright freezer space (~ 20 % more space)
- Example: ½ beef (200lbs) 7 cu ft chest or 8.5 cu ft upright

Side of Beef ~ 200 lbs. \$ 1,600 (Deposit \$320) Avg \$8/lb		Quarter of Beef ~100 lbs. \$ 925 (Deposit \$185) Avg. \$9.25/lb	
Cut	lbs.	Cut	lbs.
Stew Meat	4	Stew Meat	2
Boneless Chuck Roast	3	Boneless Chuck Roast	3
Brisket	9	Brisket	6
Shanks	11	Shanks	6
Bones	12	Bones	5
Short Ribs	8	Short Ribs	4
Flank Steak	1.5	Flank Steak	1
Skirt Steak	3	Skirt Steak	2
Bone In Rib Eye Steak	12	Bone In Rib Eye Steak	6
Porterhouse	9	Porterhouse	6
T-Bone	6	T-Bone	3
Tenderloin	6	Tenderloin	3
Sirloin Steak	5	Sirloin Steak	2
Sirloin Steak Tips	5	Sirloin Steak Tips	2
Top Round Tip Roast	4	Top Round Tip Roast	2
London Broil	9	London Broil	3
Bottom Round Roast	9	Bottom Round Roast	3
Eye of the Round Steaks	3	Eye of the Round Steaks	2
Ground Beef	50	Ground Beef	25
Patties	30	Patties	15
Notes <ul style="list-style-type: none"> • Exact weights for each cut are dependent on final hanging weight. Above are estimates and if any weights are short, we provide additional cuts in the closest equivalent cut. • Deposit is due at time of order • Once product is available, we will call to schedule pickup and final payment 			